

PIONEER



Service Manual

SPEAKER SYSTEM

CS-922A /G,E

CS-822A /G,E

CS-722A /G,E

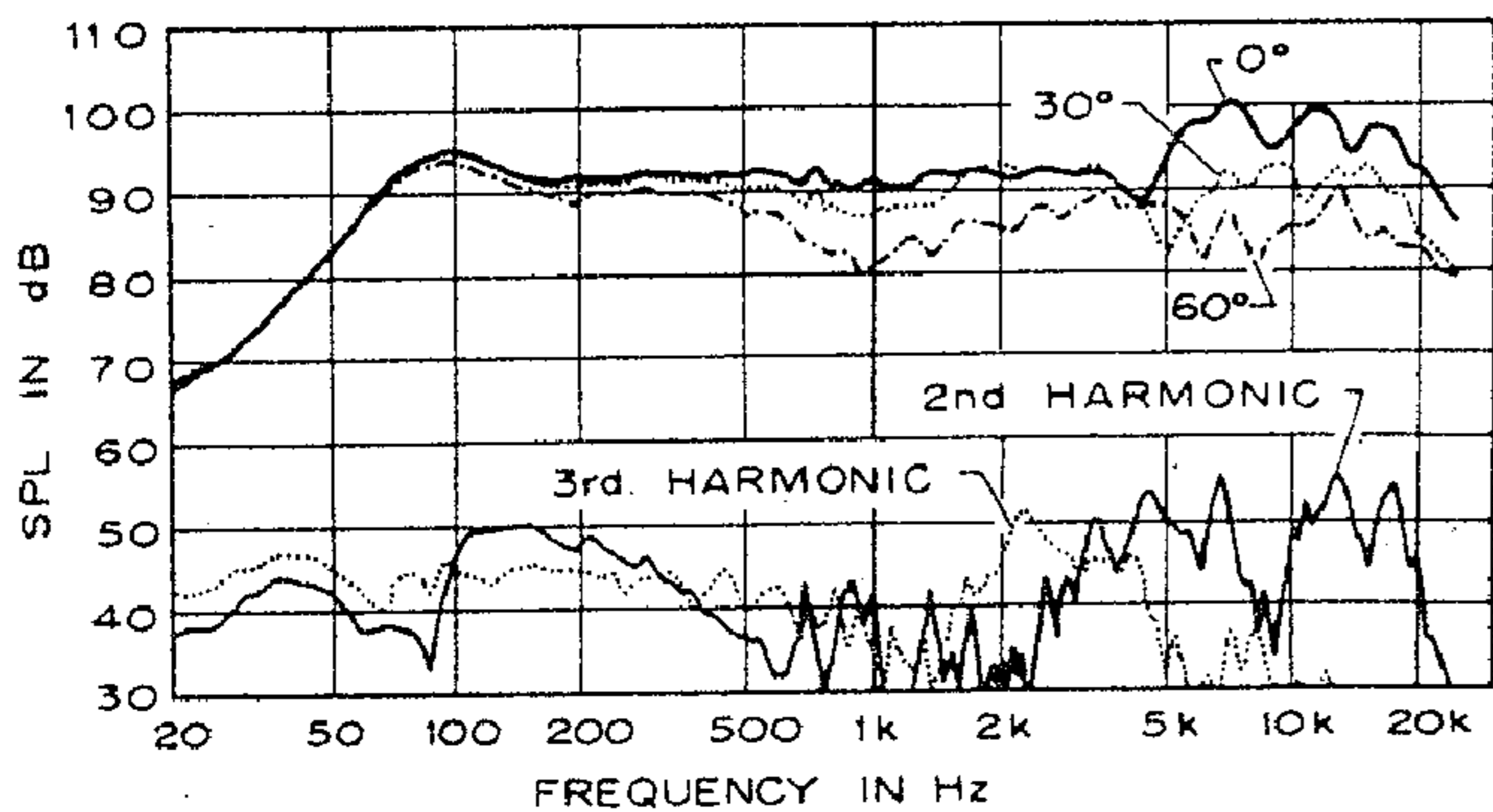
SPECIFICATIONS

CS-922A/G, E

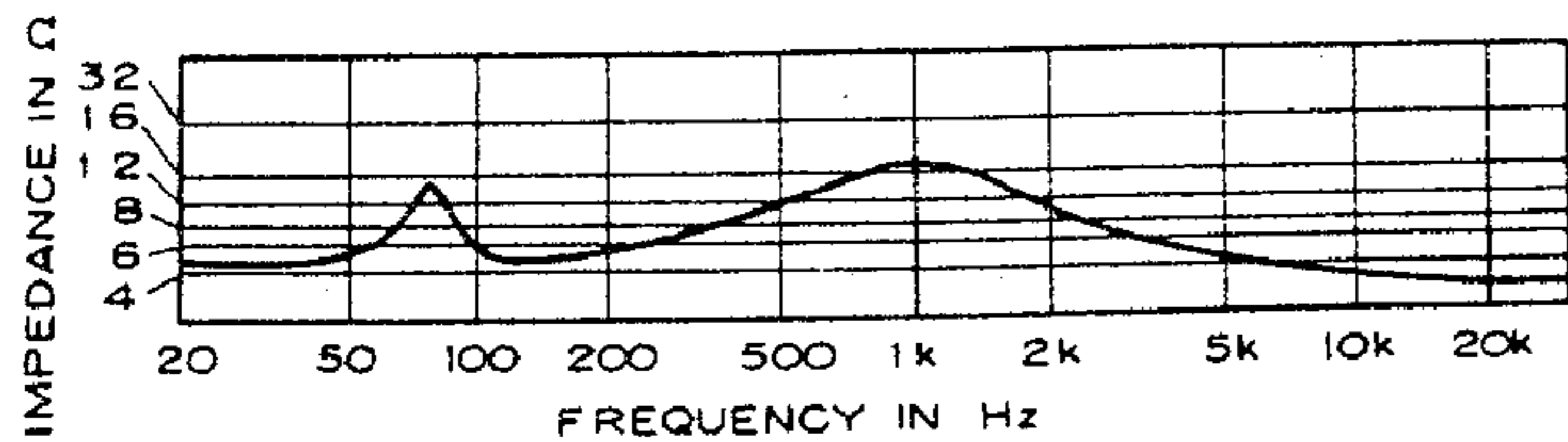
Enclosure Book-shelf style, Bass-reflex type
 System 4-way 5-speaker system
 Loudspeakers
 Woofer 40cm (16in) cone type
 Mid-range 12cm (5-1/8in) cone type
 Tweeter 6.6cm (3in) cone type x 2
 Super-Tweeter 40x7.7cm (16x3-1/8in) horn type
 Nominal Impedance 8 ohms
 Frequency Range 20 to 25,000Hz
 Sensitivity 99dB/W at 1-meter distance
 Maximum Input Power 270W
 Rated Input Power 135W
 Crossover Frequency 950Hz, 2,000Hz, 3,000Hz
 Subfunction
 Power Indicators LED: green x 9
 red x 1 (over load)
 External Dimensions 450(W)x690(H)x270(D)mm
 17-5/8(W)x27-1/8(H)x10-5/8(D)in
 Weight 25 kg/55 lb 2 oz
 Accessory Parts Speaker cords x 1
 Operating guide x 1

NOTE:
 Specifications and design subject to possible modification
 without notice due to improvements.

FREQUENCY RESPONSE & HARMONIC DISTORTION



IMPEDANCE

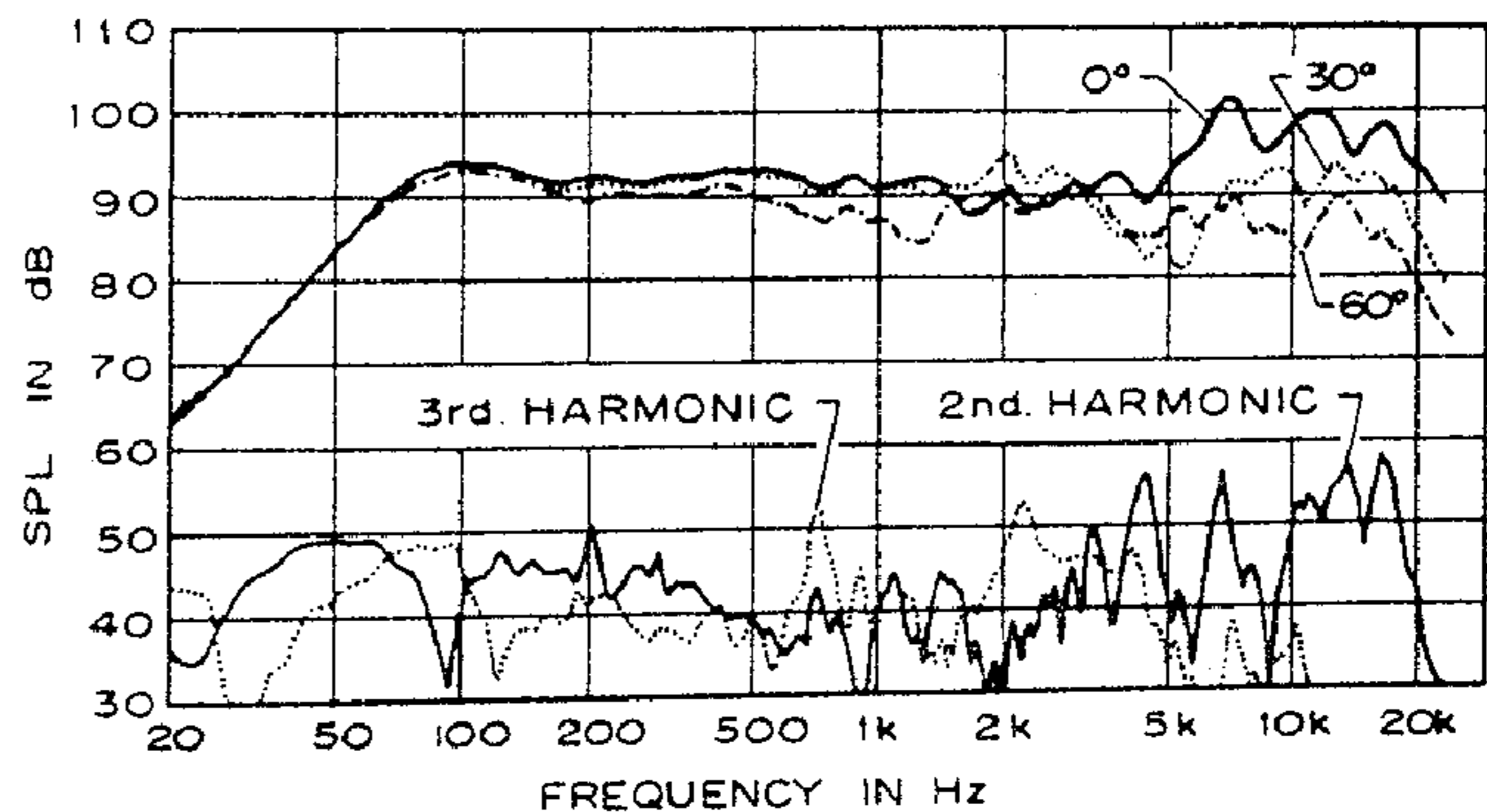


CS-822A/G, E

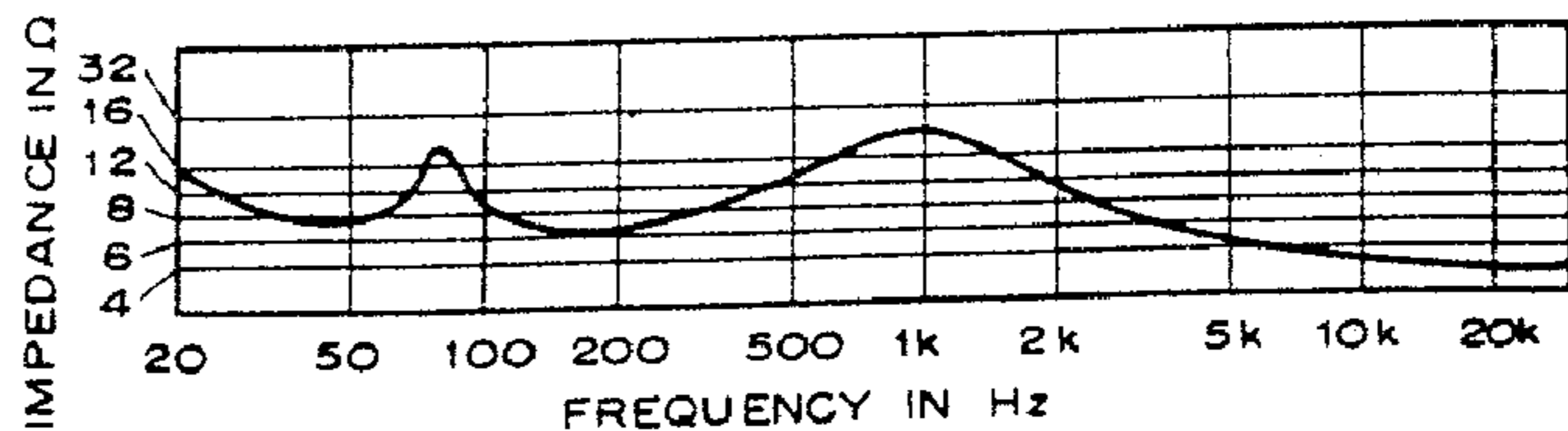
Enclosure Book-shelf style, Bass-reflex type
 System 4-way 5-speaker system
 Loudspeakers
 Woofer 30cm (13in) cone type
 Mid-range 12cm (5-1/8in) cone type
 Tweeter 6.6cm (3in) cone type x 2
 Super-Tweeter 40x7.7cm (16x3-1/8in) horn type
 Nominal Impedance 8 ohms
 Frequency Range 25 to 25,000Hz
 Sensitivity 97dB/W at 1-meter distance
 Maximum Input Power 180W
 Rated Input Power 90W
 Crossover Frequency 1,000Hz, 3,000Hz, 4,000Hz
 Subfunction
 Power Indicators LED: green x 6
 red x 1 (over load)
 External Dimensions 410(W)x646(H)x280(D)mm
 16-1/8(W)x25-1/2(H)x11(D)in
 Weight 17.5 kg/38 lb 9 oz
 Accessory Parts Speaker cords x 1
 Operating guide x 1

NOTE:
 Specifications and design subject to possible modification
 without notice due to improvements.

FREQUENCY RESPONSE & HARMONIC DISTORTION



IMPEDANCE

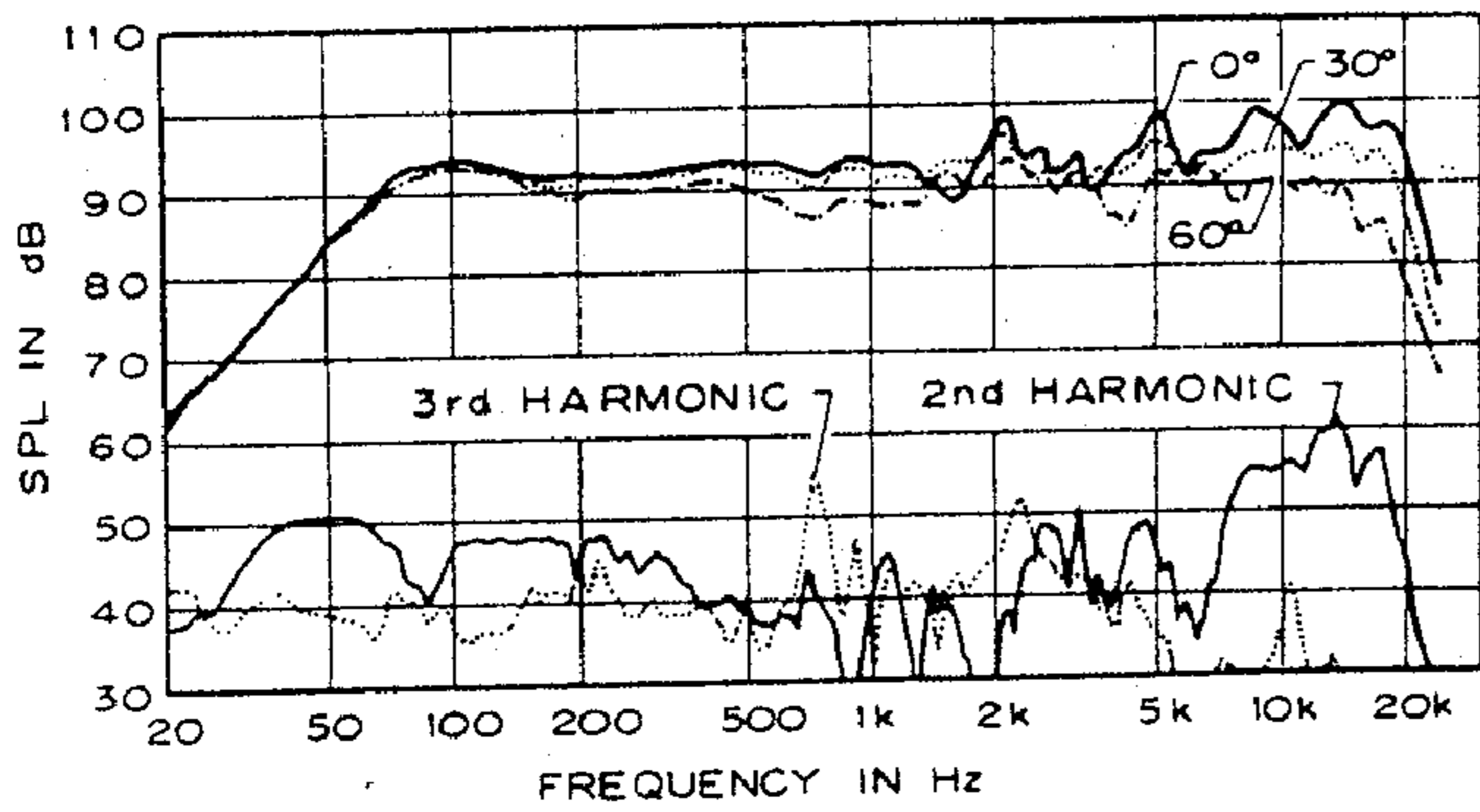


CS-722A/G, E

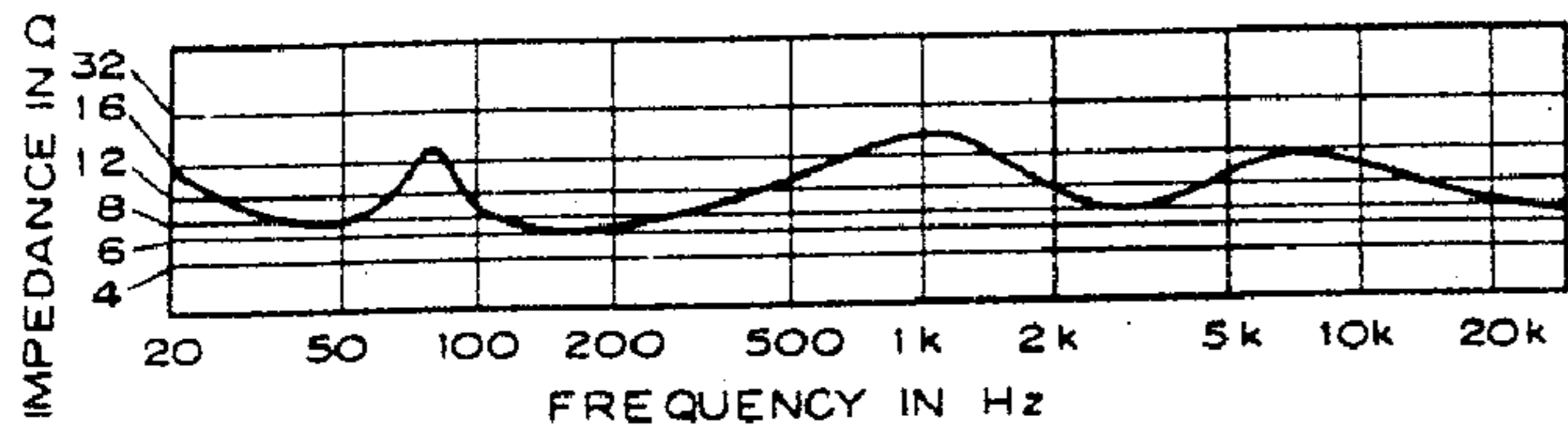
- Enclosure Book-shelf style, Bass-reflex type
- System 3-way 3-speaker system
- Loudspeakers
 - Woofer 30cm (13in) cone type
 - Mid-range 12cm (5-1/8in) cone type
 - Tweeter 40x7.7cm (16x3-1/8in) horn type
- Nominal Impedance 8 ohms
- Frequency Range 25 to 22,000Hz
- Sensitivity 97dB/W at 1-meter distance
- Maximum Input Power 120W
- Rated Input Power 60W
- Crossover Frequency 1,000Hz, 3,000Hz
- Subfunction
 - Power Indicators LED: green x 4
red x 1 (over load)
- External Dimensions 410(W)x646(H)x280(D)mm
16-1/8(W)x25-1/2(H)x11(D)in
- Weight 17 kg/37 lb 8 oz
- Accessory Parts Speaker cords x 1
Operating guide x 1

NOTE:
Specifications and design subject to possible modification without notice due to improvements.

FREQUENCY RESPONSE & HARMONIC DISTORTION

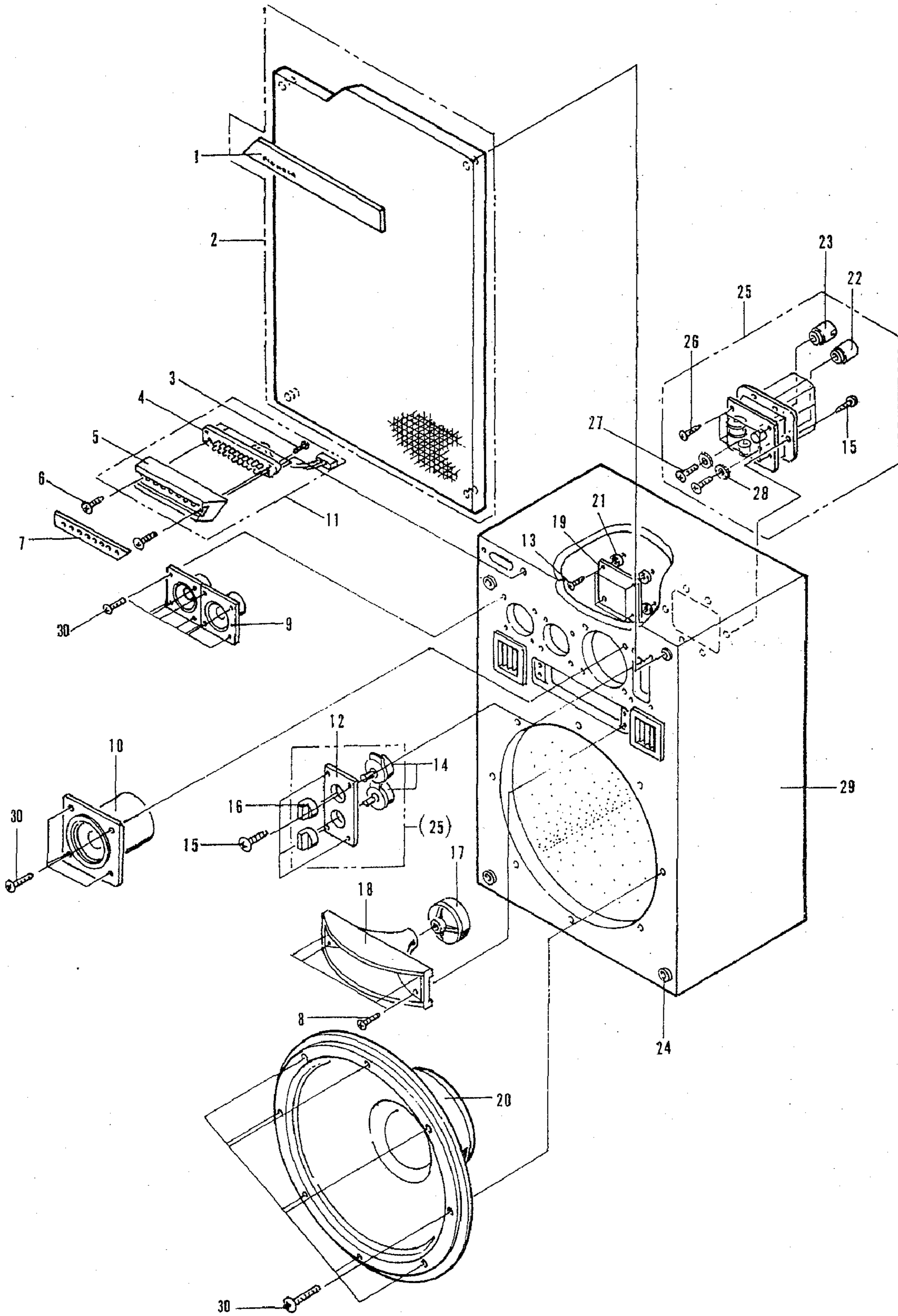


IMPEDANCE



2. EXPLODED VIEW

CS-922A



1

2

3

4

